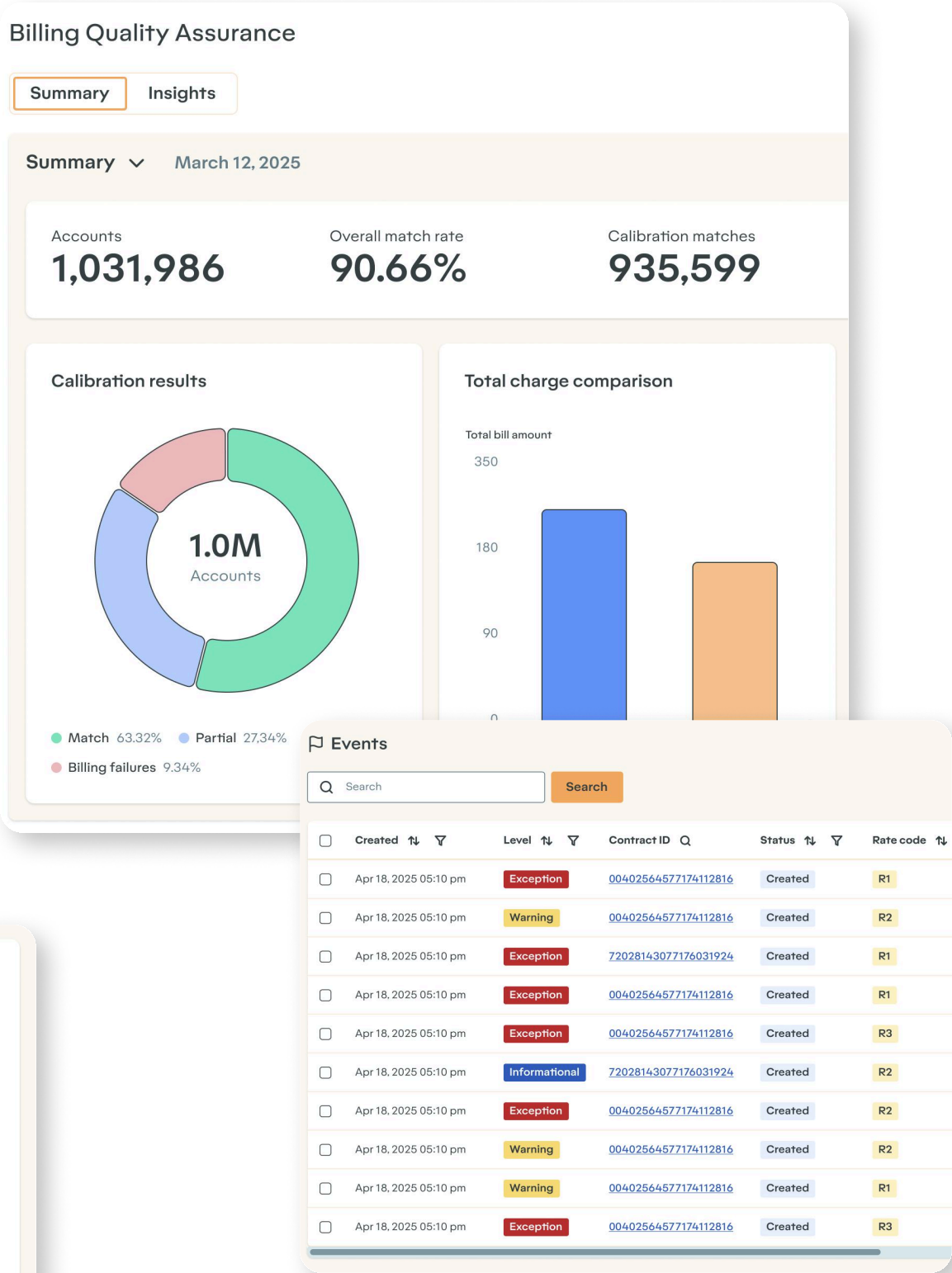
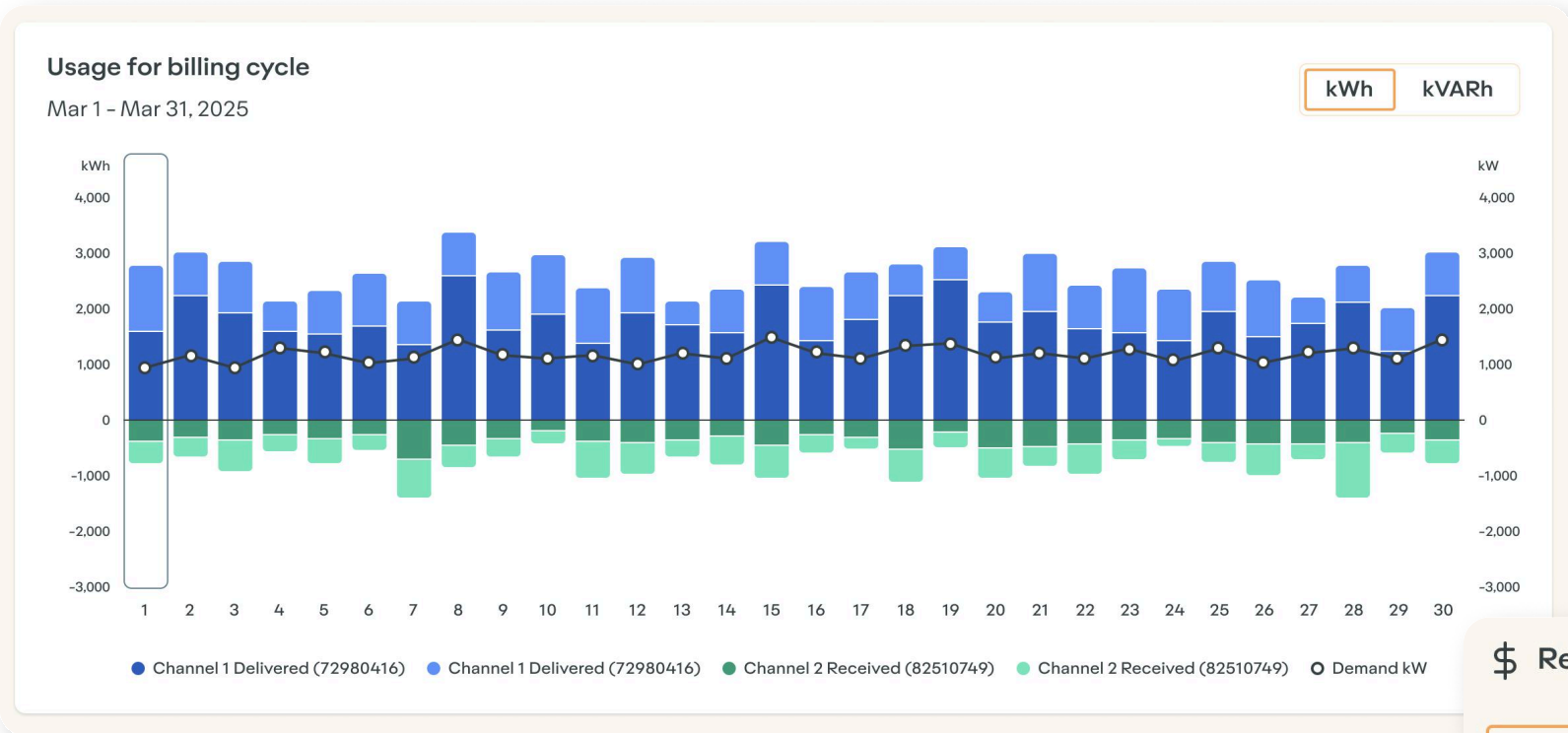


Complex Billing, Simplified.

The Customer Information System (CIS) plays a critical role for utilities, serving as a cash register and customer data master. Even though the CIS is key to utility operations, it often isn't agile enough to meet the changing needs of today's grid.

The influx of new rate and tariff structures, combined with customizable DER options, make billing customers far more difficult than just a few years ago. Today's CISs are typically based on legacy designs and aren't equipped to bill the complex and dynamic rate structures that are becoming more commonplace in the industry.



\$ Reconciliation per account 1,031,986

Filter Search

96,132 Match: Partial calibration match X

Account	Bill ID	Bill start	Bill end	Match	Rate
> 917491324	9876	Feb 12, 2025	Mar 12, 2025	98.88%	R1
> 86957845	9875	Feb 12, 2025	Mar 12, 2025	97.36%	R1
> 36598756	9874	Feb 12, 2025	Mar 12, 2025	93.00%	R1
> 26478411	9873	Feb 12, 2025	Mar 12, 2025	85.23%	R1
> 99635877	9872	Feb 12, 2025	Mar 12, 2025	82.11%	R1
> 77456958	9871	Feb 12, 2025	Mar 12, 2025	90.96%	R1
> 55632269	9870	Feb 12, 2025	Mar 12, 2025	94.00%	R1

GRIDX CALCULATE

GridX Calculate simplifies the journey of implementing and billing advanced rates, like time-varying rates (TVRs), with an add-on engine that enhances and complements the utility CIS. This is needed because utilities using legacy systems often rely on manual tools like spreadsheets to bill customers for complex rate structures, DERs and EVs accurately and on-time. The current process is inefficient, costly, time-consuming and filled with risk. GridX Calculate lets utilities operate more efficiently, reliably and cost effectively in the face of growing rates complexity.





Benefits of GridX Calculate

◆	◆	◆	◆
ACCURACY	MORE DATA	AUTOMATION	BUILD VALUE
Production billing-level accuracy for TVRs, including Dynamic Pricing rates, and the flexibility to handle billing for customers on DERs like EVs, solar generation and battery storage.	Incorporate smart meter data to precisely calculate bills, eliminating reliance on billing determinants.	Easily identify, troubleshoot, and fix billing errors by automating processes previously completed in spreadsheets.	Extend the useful life of the existing CIS with solutions designed to work with TVRs and modern utility infrastructure.

Product Features

GridX Calculate's feature set makes the process of launching pilots for new rates easier. The rate modeling capability allows users to adjust rates and tariffs in a sandbox-like setting. After that, the utility can actually run a real-life pilot where customers engage with the new rate on a monthly basis through "shadow billing". GridX tracks the performance of how customers perform on the new rate, compared to their existing rate.

The utility can use the results to quantify customer impacts on proposed rate structures to both satisfy stakeholder questions and to slowly roll out new rates to customers to get them familiar with the structure. This information is very useful in giving the utility foresight into pilot performance and the ability to provide regulators and customers accurate expectations about future program results.

◆	◆	◆
EXCEPTION HANDLING	ACCURATE BILLING	INTERVAL CALCULATION
The ability to view and handle events and exceptions during the billing process, including insight into the exception, the reason or message for the error, and the ability to resolve any system errors.	Bills are accurately and precisely calculated based on tariff, contract, rider, option and tax rules.	Native, in-engine interval based calculation eliminates the reliance on separately configured systems to create billing determinants.



GridX Calculate manages the complex calculations today's advanced rate structures require and can generate millions of residential and business account bills accurately and reliably. It is designed to automate existing processes and remove potential calculation errors, improving outcomes for utility stakeholders and customers alike. GridX Calculate's flexibility to work with existing CISs and improve functionality without significant investments in time and money creates additional value to the utility.

The One True Rates Platform

GridX is the leading Enterprise Rate Platform provider to modern utilities and energy technology companies. Our software enables utilities to better design, promote, operationalize, and drive adoption of emerging energy products and programs.

For more information, please visit gridx.com.